

Emotional Metal Painting  
**YongHo Park**

---

日本総代理店：有限会社サイト二番町

---

## Artist Statements

## 作家の言葉

I think the artwork is a special language for an artist to express his thought and sensibility. As for me, metal is the most suitable and familiar material to express my thought and sensibility because I majored in metal art & design at the university. So metal could become my unique tool that would draw lines and make images instead of pencil or brush, and I always try to reflect my inspiration into various metallic materials.

Basically, metal looks hard and feels cold, but on the other hand, it also has different characteristics that are gentle and delicate. Similar to these characteristics of metal, there are a lot of precious things with its intrinsic beauty in nature but people cannot recognize them at a glance. Hidden beauty can be found after long observation and deep contemplation, so it's more precious and impressive. When I get to find out and feel such beauties of nature, they fascinate and inspire me so that I can create something to express that beauty as an artist. I'd like to convey to people the warm and soft feeling of the metal with delicate shapes and richer colors. And I hope people can hear what I talk through artworks and feel the beautiful sensibility together with me.

アーティストにとって作品は自身の考えや感性を表現出来る特別な言葉であると言えることが出来る。金属工芸を専攻した私にとっては金属は私の考えと感性を表現する為に最も習熟しており最も適した材料である。スチール、ステンレススチール、アルミニウムなど多様な素材を作品のテーマ技法に合わせて選択し作品表現へと結びつけている。金属は鉛筆の代わりに線を引き、筆の代わりにイメージを作り出しテーマを表現する。

一般的に金属は荒く冷たいイメージを持たれているが、その中にはやわらかさと繊細さが存在する。我々の生活の中にも一目で簡単に識別できない内面の大切な美しさが存在する。内面に隠された美しさは長時間の観察と思索の後に現れるものなので、より一層感動的であり大切に思える。日常生活の中でこのような表に現れていない美を発見した時、私はそれに魅了され、インスピレーションを得てその感性を作品として表現する。私の作品の中で表に現れない美が繊細な形と豊かな色感で表現された金属を通じて、やわらかく温かい感性を感じて頂ける事を願っている。そして多くの人が作品を通して話しかけている私の言葉と感性を受け止め対話してくれることを望んでいる。

## Reviews

スチールオブジェアートの第一人者であるYHPark氏は培われたテクニックと感性で独自の解釈から生まれる  
現代的なデザインの中に自然をモチーフにした、繊細で有機的な作品を作り続けている作家である  
人々を引き付けてやまないYHPark氏の魅力ある作品世界を十分に堪能出来た大阪で初めての展示会が開催されました。  
- 有限会社サイト二番町

"A perfect harmony emerges from Yongho Park's delicate artworks. A constant source of inspiration to him,  
he beautifies nature adding a contemporary touch, manipulating rough materials using a skillful and delicate technique."  
"I have been transported by Yongho Park's abstract compositions, full of delicacy and in which nature's inspiration is the key;  
his refined lines, soft colors and use of space all reflect the importance found in the balance of substance and absence."  
- By gallery Carré d'artistes

"Critically acclaimed South Korean artist Yongho Park is set to become a big hit amongst artists on the national stage.  
His abstract landscapes, floral subjects, odes to nature and tradition, are a great success internationally.  
Acrylic, ink, color, all the possible mediums are used in these resolutely contemporary botanical compositions,  
which integrate parts cut out of metal (steel, aluminum) to become three dimensional and design."  
- By journalist Christophe Belhomme

## Profile



### C V

2011 to present. partner artist / gallery 'Site Nibancho' (Kobe, Japan)

2023. Received MFA (Painting) at Hong-Ik University (Seoul, Korea)

2020. Received a prize at the 39th Grand Art Exhibition of Korea

2018 to 2021. partner artist / gallery 'Design Art Concept' (Miami, U.S.A.)

2017 to 2021. partner artist / gallery 'Carré d'artistes' (Paris, France)

2001. Received BFA (Metal Art & Design) at Hong-Ik University (Seoul, Korea)

### SOLO EXHIBITIONS

2020. Solo Exhibition at Gallery Shibatacho (Osaka, Japan)

2019. Solo Exhibition at Yale Gallery (Seoul, Korea)

2010. Invitational Solo Exhibition at Gallery PaMa (Tokyo, Japan)

### GROUP EXHIBITIONS

2020. 'FORM 2020' at CICA Museum (Gimpo, Korea)

2019. Design Plus Miami (Miami, U.S.A.)

2019. Exhibition at Gallery Carré d'artistes Toulouse (Toulouse, France)

2019. Invitational Exhibition at City Museum of Osan (Osan, Korea)

2018. Exhibition at Gallery Carré d'artistes Marais (Paris, France)

2018. Exhibition at Gallery Carré d'artistes Saint Germain (Paris, France)

2018. Gyeonggi Art Exhibition (Tour exhibition in Korea)

2006. Collaboration show at Gallery Se-Jul (Seoul, Korea)

## Artwork Description

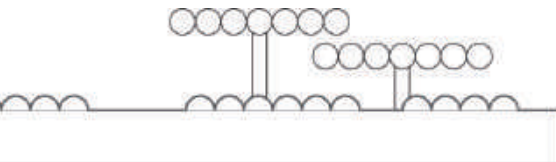
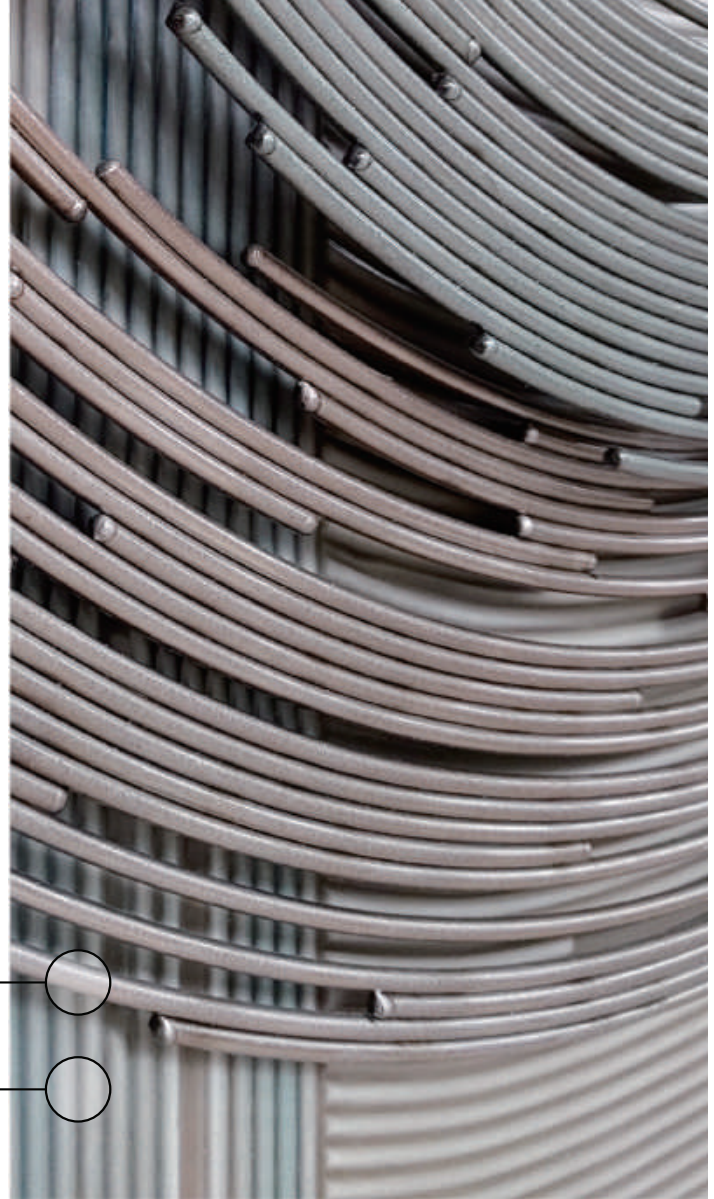
YongHo Park is a metal artist who applies the technique of metal to the sensibility of painting and made a new genre of three-dimensional painting. For this reason, his artworks have unique characteristics that are differentiated from normal painting in many ways. In all of his artworks, metal is used as a main material and it's also the primary means of expression.

So depending on the subject matter, he chooses the most appropriate one out of various kinds of metals (steel, stainless steel, aluminum, etc.). At the same time, he makes wood panel and adds texture and color onto it, and the metal work is finally combined with this panel.

Therefore, his artworks have distinctive *matière*, three-dimensional effects, and a sense of space that came from the harmony of metal and other materials such as wood and plaster.

Urethane Paint, Pigment on Stainless Steel Wire

Urethane Paint, Pigment, Oil-based Ink, Plaster on Wood



Artist YongHo Park  
(パク ヨンホ)

## Draw the Emotion (感性を描く)

2020年 芝田町画廊にて個展(大阪市北区)

企画協賛:(有)サイト二番町



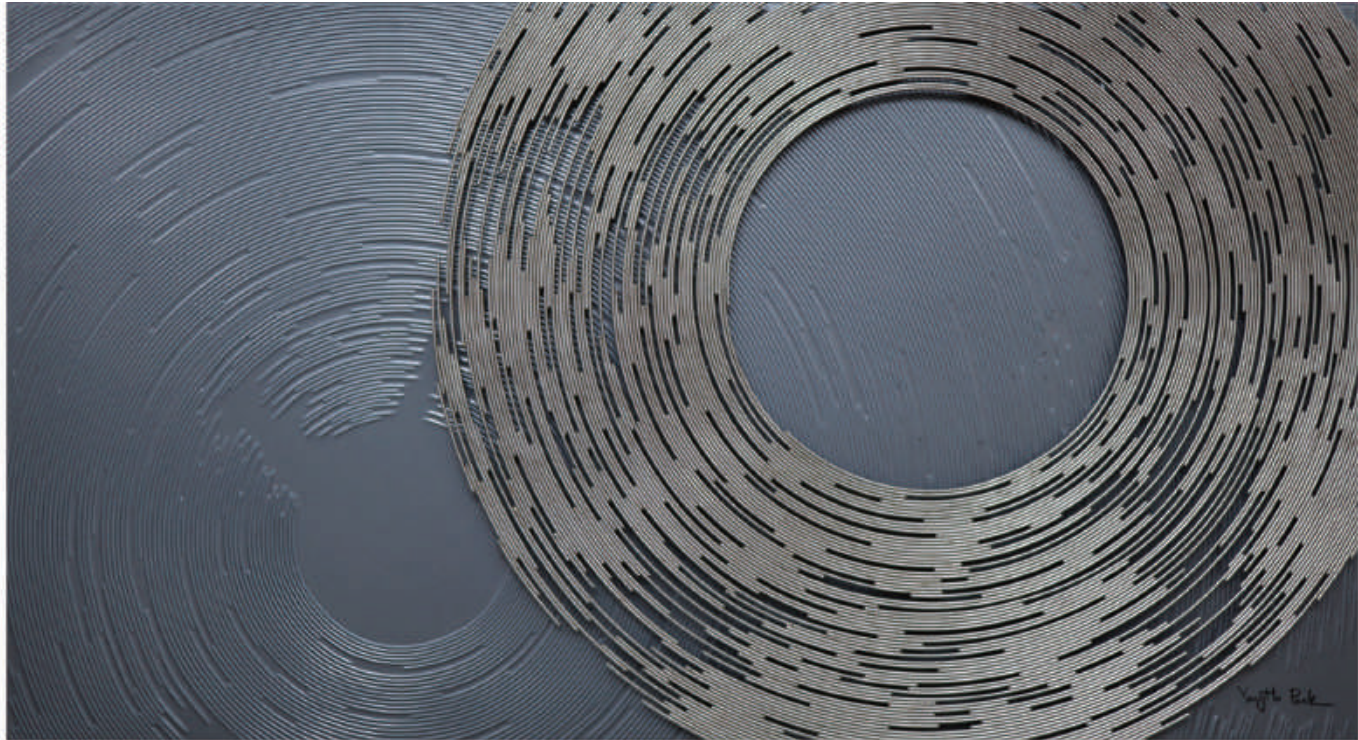
# Draw the Emotion



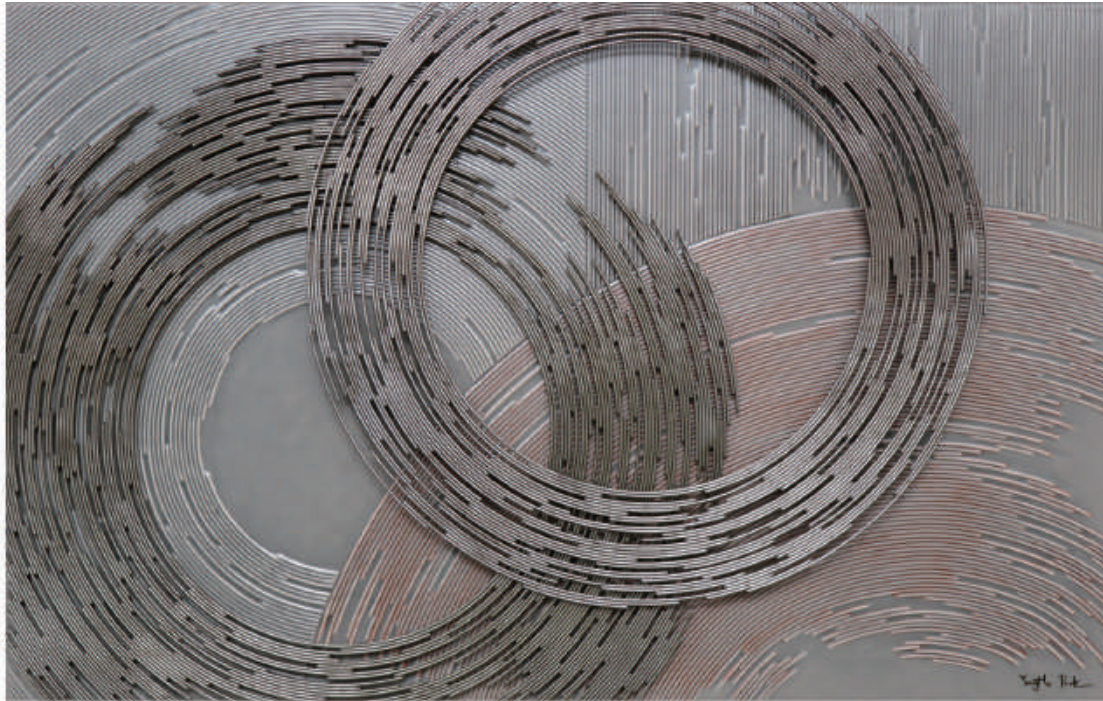


Draw the light-OS04, 2020  
Urethane Paint, Pigment, Plaster on Wood / Urethane Paint, Pigment on Stainless Steel Wire  
W 60cm x H 95cm x D 6cm



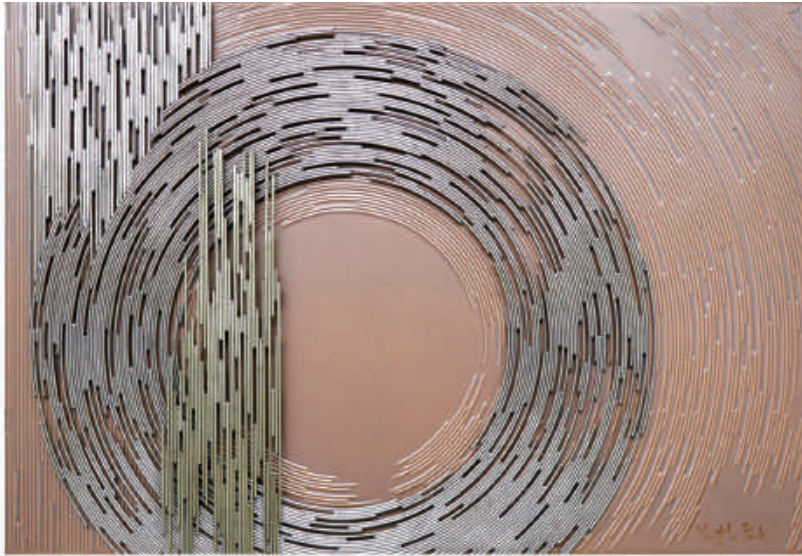


Draw the light-OS02, 2020  
Urethane Paint, Pigment, Plaster on Wood / Urethane Paint, Pigment on Stainless Steel Wire  
W 110cm x H 60cm x D 6cm



Draw the light-OS03, 2020  
Urethane Paint, Pigment, Plaster on Wood / Urethane Paint, Pigment on Stainless Steel Wire  
W 95cm x H 60cm x D 6cm

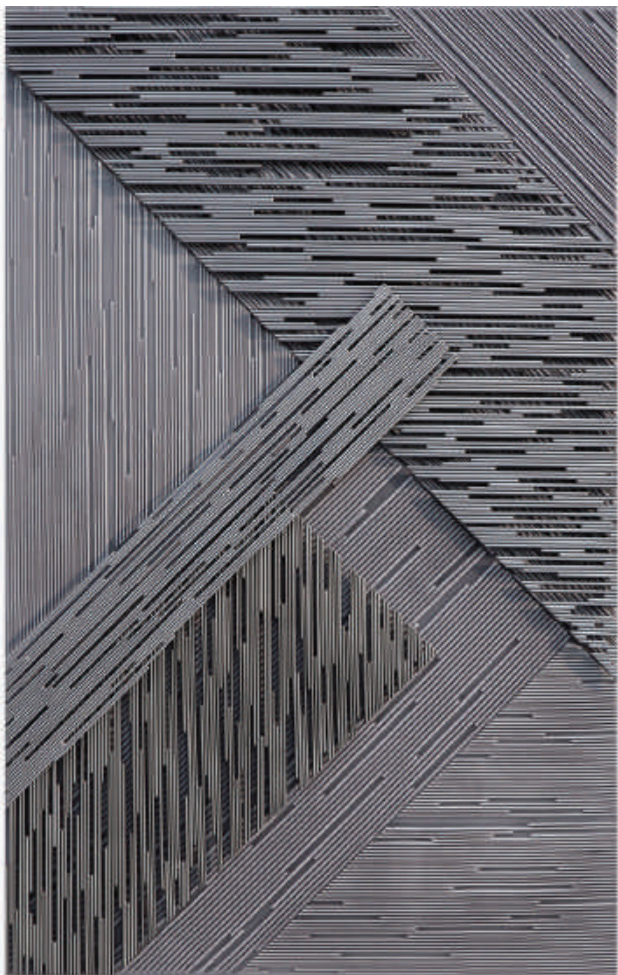




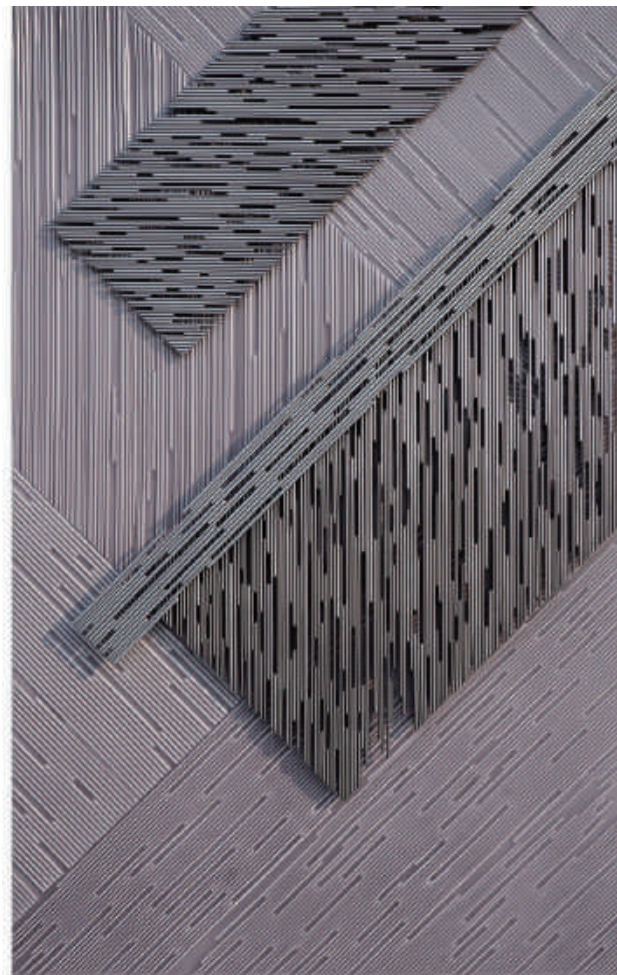
Draw the light-OS05, 2020  
 Urethane Paint, Pigment, Plaster on Wood  
 Urethane Paint, Pigment on Stainless Steel Wire  
 W 80cm x H 55cm x D 6cm



Draw the light-OS06, 2020  
 Urethane Paint, Pigment, Plaster on Wood  
 Urethane Paint, Pigment on Stainless Steel Wire  
 W 55cm x H 80cm x D 6cm

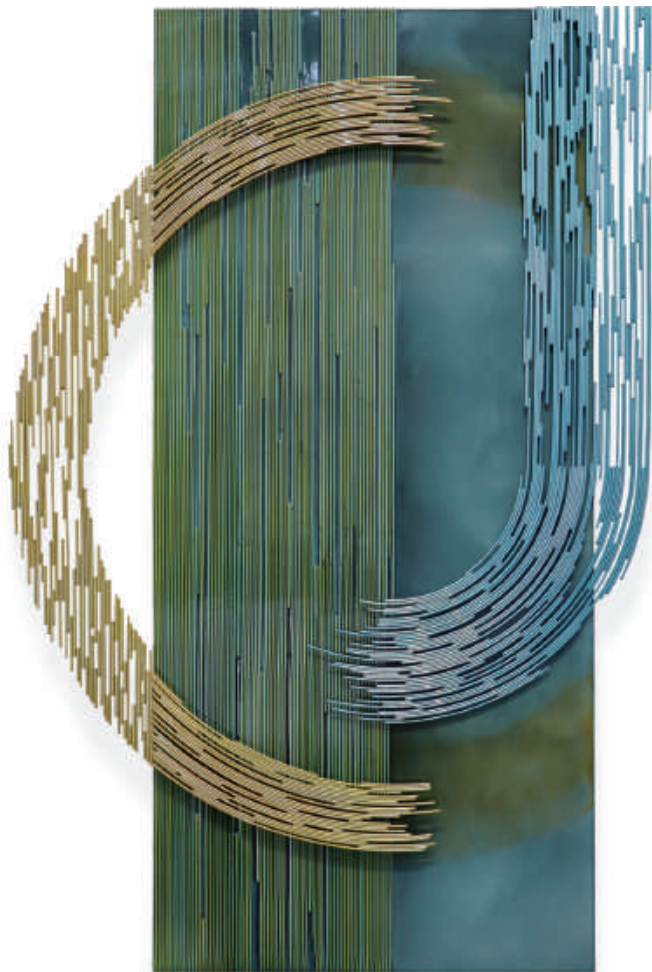


Time layer I, 2021  
 Urethane Paint, Pigment, Plaster on Wood  
 Urethane Paint, Pigment on Stainless Steel Wire  
 W 60cm x H 95cm x D 6cm



Time layer II, 2021  
 Urethane Paint, Pigment, Plaster on Wood  
 Urethane Paint, Pigment on Stainless Steel Wire  
 W 60cm x H 95cm x D 6cm





Interaction #1, 2023  
 Urethane Paint, Pigment, Oil-based Ink, Plaster on Wood  
 Urethane Paint, Pigment on Stainless Steel Wire  
 W 79cm x H 120cm x D 7cm



Interaction #2, 2023  
 Urethane Paint, Pigment, Oil-based Ink, Plaster on Wood  
 Urethane Paint, Pigment on Stainless Steel Wire  
 W 87cm x H 120cm x D 7cm

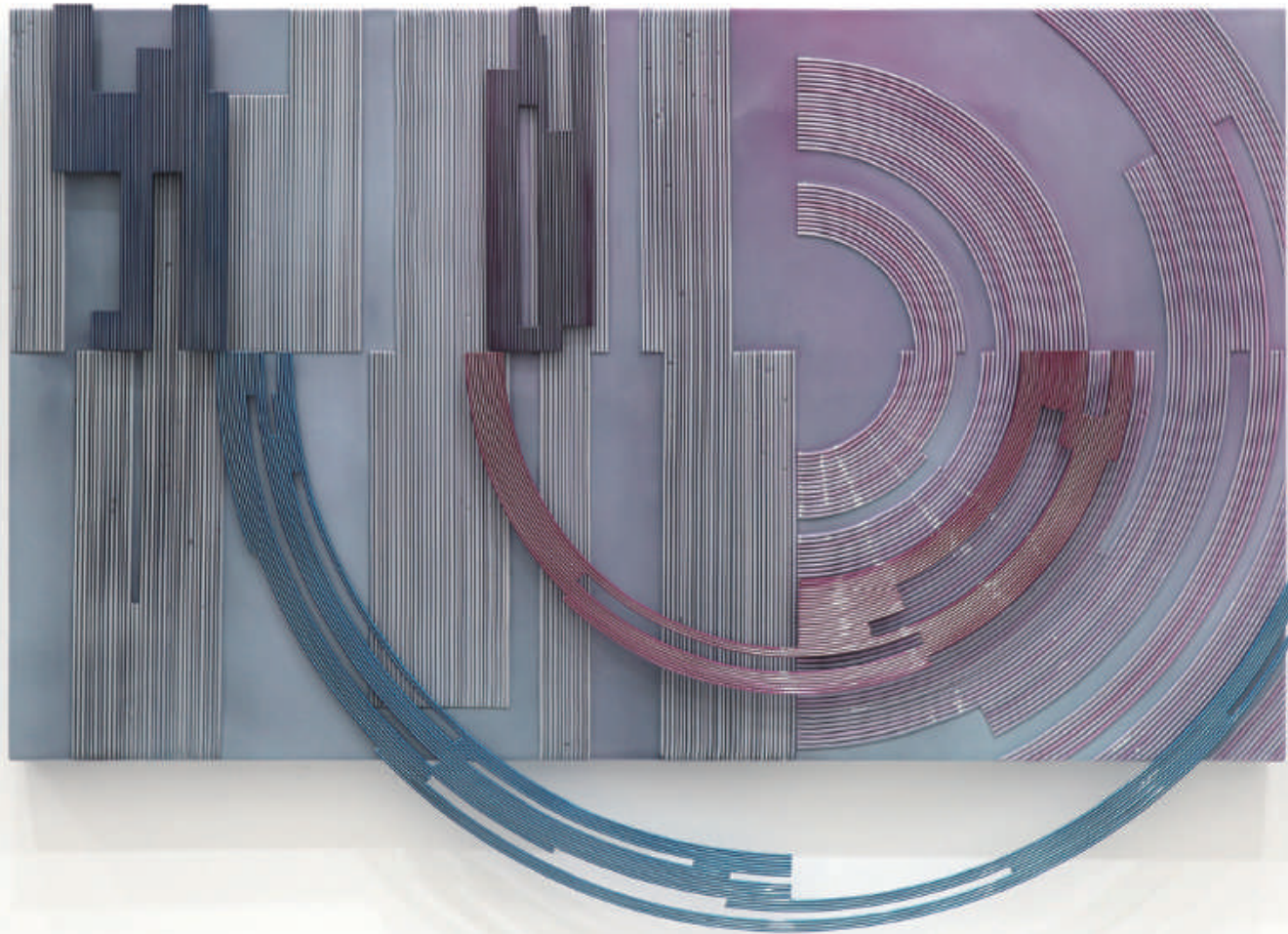


Interaction #3, 2023  
 Urethane Paint, Pigment, Oil-based Ink, Plaster on Wood  
 Urethane Paint, Pigment on Stainless Steel Wire  
 W 81cm x H 120cm x D 7cm



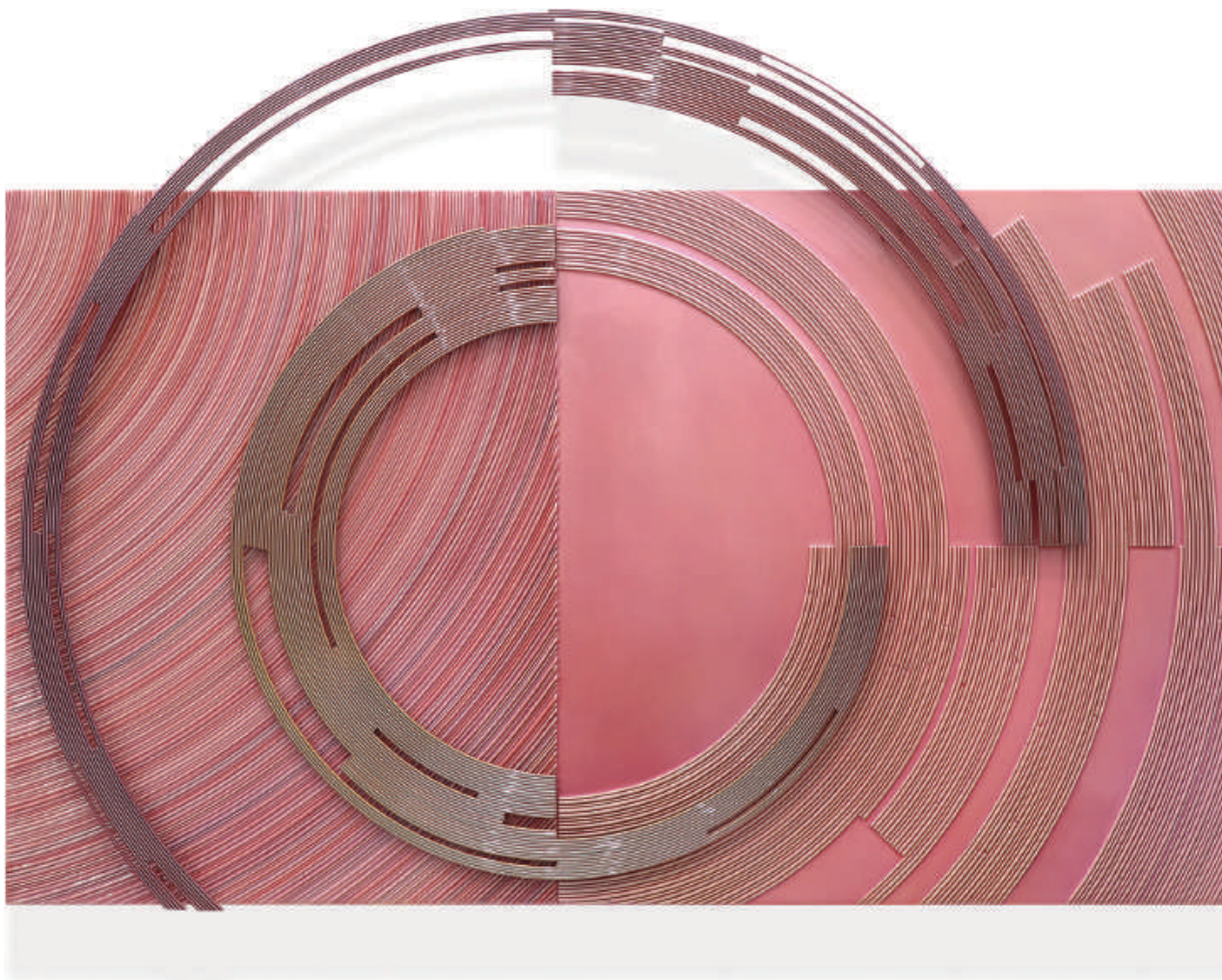
Interaction #4, 2023  
 Urethane Paint, Pigment, Oil-based Ink, Plaster on Wood  
 Urethane Paint, Pigment on Stainless Steel Wire  
 W 83cm x H 120cm x D 7cm





Interaction #5, 2023

Urethane Paint, Pigment, Oil-based Ink, Plaster on Wood / Urethane Paint, Pigment on Stainless Steel Wire  
W 120cm x H 85cm x D 7cm



Interaction #6, 2023

Urethane Paint, Pigment, Oil-based Ink, Plaster on Wood / Urethane Paint, Pigment on Stainless Steel Wire

W 120cm x H 85cm x D 7cm





The Moment I, 2020  
Urethane Paint, Pigment, Plaster on Wood  
Urethane Paint, Pigment on Stainless Steel Wire  
W 132cm x H 118cm x D 6cm



SHERATON WALKER HILL HOTEL CONVENTION CENTER (SEOUL, KOREA)

Essence of Foliage, 2018

Urethane Paint, Pigment, Plaster on Wood / Urethane Paint, Pigment on Steel Wire

W 227cm x H 181cm x D 20cm

Essence of Foliage





Draw the Forest-OS03, 2020

Urethane Paint, Pigment, Plaster on Wood / Urethane Paint, Pigment on Steel Wire

W 65cm x H 90cm x D 12cm



Steep - Op.3, 2018  
 Urethane Paint, Pigment, Plaster on Wood  
 Urethane Paint, Pigment on Steel Wire  
 W 100cm x H 120cm x D 12cm

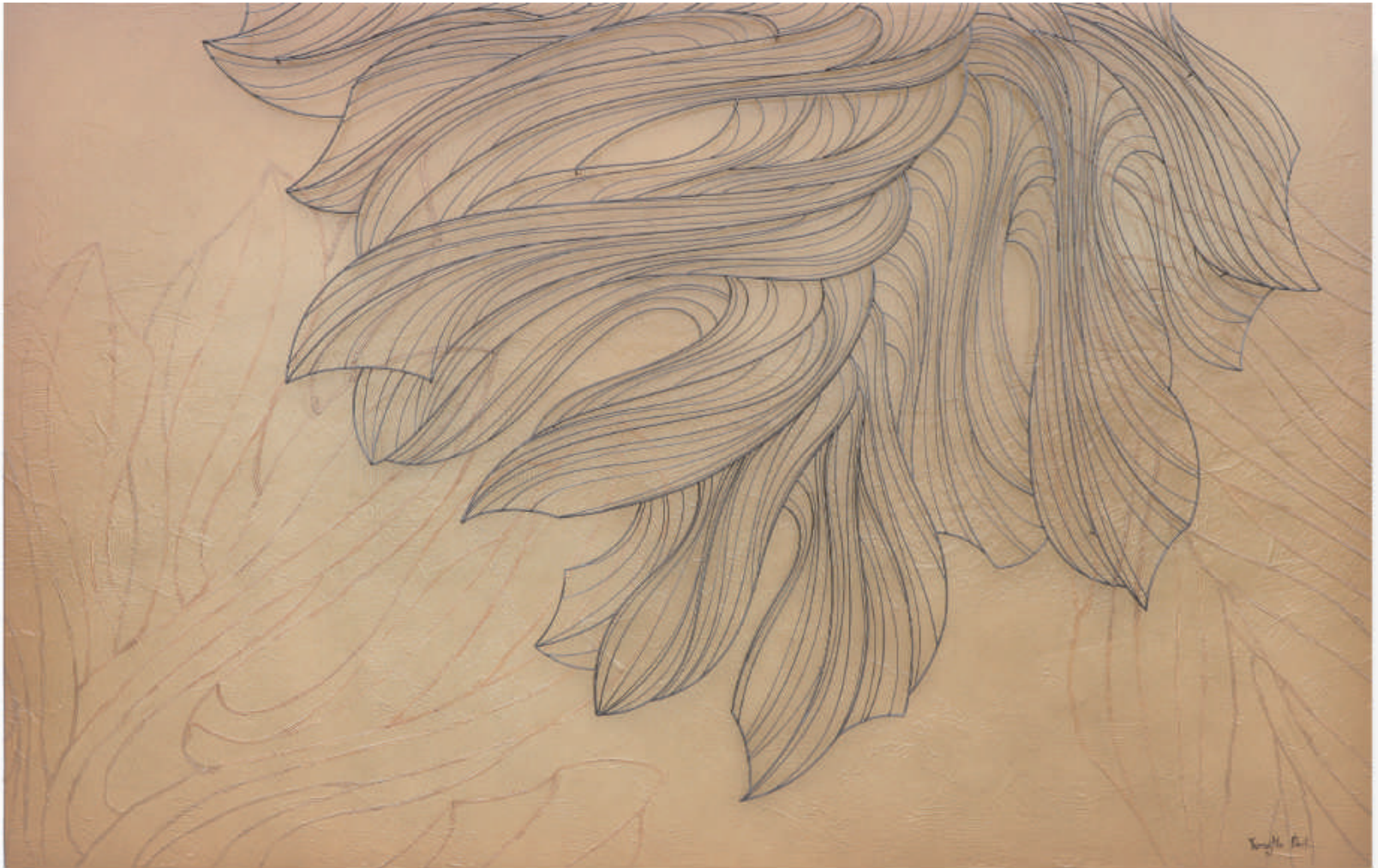




Steep - Op.1, 2021

Urethane Paint, Pigment, Plaster on Wood / Urethane Paint, Pigment on Steel Wire

W 165cm x H 75cm x D 12cm



Draw the Forest - RE01, 2021

Urethane Paint, Pigment, Plaster on Wood / Urethane Paint, Pigment on Steel Wire

W 188cm x H 120cm x D 12cm

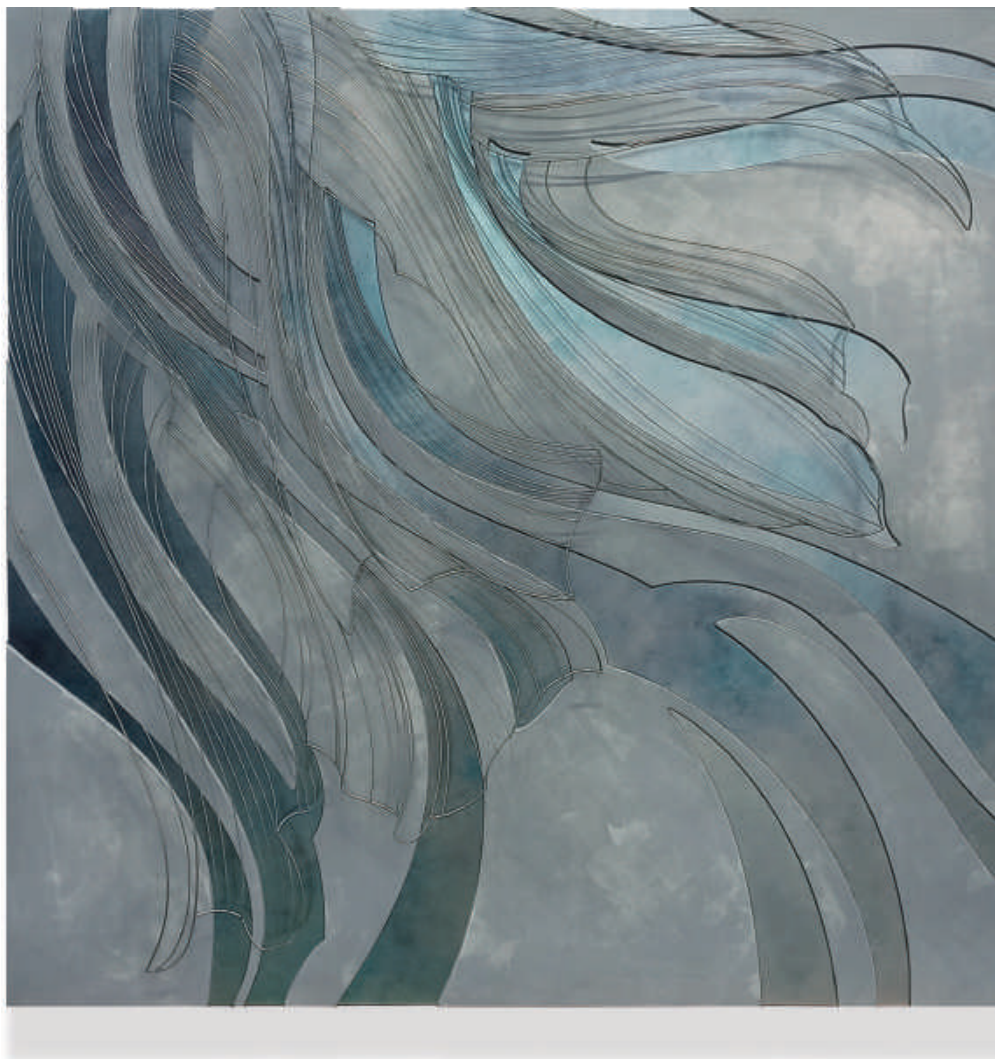




Steep - Op.2, 2018

Urethane Paint, Pigment, Plaster on Wood / Urethane Paint, Pigment on Steel Wire

W 160cm x H 80cm x D 12cm



Draw the Forest - Op.1, 2021

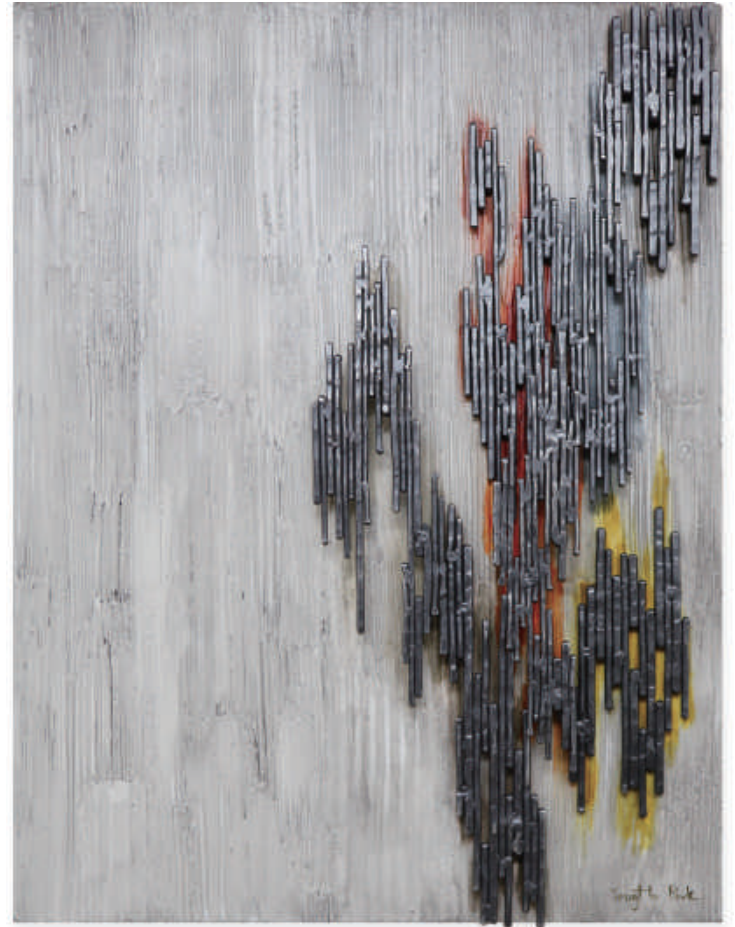
Urethane Paint, Pigment, Plaster on Wood / Urethane Paint, Pigment on Aluminum & Stainless Steel Wire

W 140cm x H 140cm x D 12cm



Draw the Time-OS02, 2020  
Urethane Paint, Pigment, Oil-based Ink, Plaster on Wood  
Urethane Paint, Pigment on Aluminum Wire  
W 65m x H 50cm x D 6cm





Draw the Time-OS03, 2020

Urethane Paint, Pigment, Oil-based Ink, Plaster on Wood

Urethane Paint, Pigment on Aluminum Wire

W 50cm x H 65cm x D 6cm





Draw the Time-OS01, 2020

Urethane Paint, Pigment, Oil-based Ink, Plaster on Wood / Urethane Paint, Pigment on Aluminum Wire

W 110cm x H 50cm x D 6cm



INVITATIONAL EXHIBITION at CITY MUSEUM OF OSAN (OSAN, KOREA)

Nebula , 2019

Urethane Paint, Pigment on Aluminum

W 180cm x H 100cm x D 5cm






Nocturne, 2020  
Acrylic on wood / Stainless Steel  
Urethane Paint, Pigment on Aluminum  
W 65cm x H 150cm x D 5cm



# YongHo Park

 park\_yongho\_art

Copyright 2023. Artyho All rights reserved.

有限会社サイト二番町

〒658-0032

神戸市東灘区向洋町中6-9 KFM1F

TEL.078-811-7676 FAX.078-811-7678

E-mail:info@site-nibancho.co.jp

<https://www.site-nibancho.co.jp/>